

## 25mm **SURANO** wardrobe & barn doors

This shaker style door, using joinery, glued and dowelled multipiece construction will add an element of luxe character, enhanced by the selection of either Woodmatt, Ravine, Matt or Smooth Melamine finishes or the new glass inserts, adding a modern touch to any space.

Available as a completed door, with optional wheel rebates or as frame only, the Surano 25mm sliding wardrobe and barn door range is a made to measure product with a lead time of 15 business days.

- Impact-resistant to everyday knocks and bumps.
  - Glued and dowelled joints ensuring strength and stability.
  - 25mm thickness with 130mm rails and 9mm insert.
- Maximum 1250mm wide x 2940mm high

### NOTE

- Grain direction will always be horizontal through the top and bottom rails, and vertical through the side rails and centre panel



Drawings are for illustrative purpose only, and are not true to scale.

COVER IMAGE: 25mm **SURANO** wardrobe doors in Blackened Oak Woodmatt.

## 25mm **SURANO** wardrobe & barn doors



polytec

[www.polytec.com.au](http://www.polytec.com.au)

p 1300 300 547

polytec



Surano / inserts



Contrasting Melamine    Matching Melamine



Clear Glass    Frosted Glass



Fluted Glass    Grey Glass



Mirror    Smokey Grey Mirror



Starphire White Glass    Starphire Black Glass

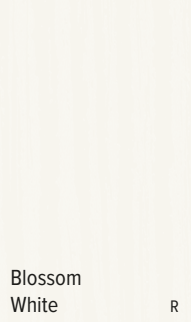
25mm **SURANO** wardrobe doors in Manor Oak Woodmatt.



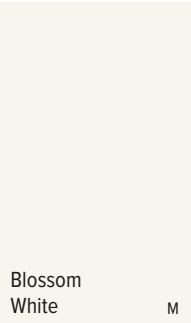
Surano / solid



Polar White    M



Blossom White    R



Blossom White    M



Silk    M



Oyster Grey    M

Surano / timberprint



Angora Oak    Wm



Coastal Oak    Wm



Laurel Oak    Wm



Botany Oak    Wm



Antico Oak    Wm



Bottega Oak    Wm



Plantation Ash    Wm



Ecu Oak    Wm



Manor Oak    Wm



Society Oak    Wm



District Oak    Wm



Blackened Oak    Wm



Blonde Oak    Wm



Boston Oak    Wm



Prime Oak    Wm



Hazel Oak    Wm



Bronzed Oak    Wm



Black Ply    Wm



Natural Oak    R



Tasmanian Oak    Wm



Notaio Walnut    Wm



Florentine Walnut    Wm

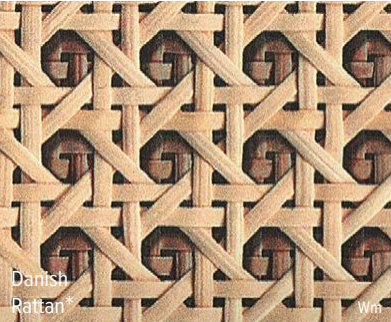


Rubra Oak    Wm

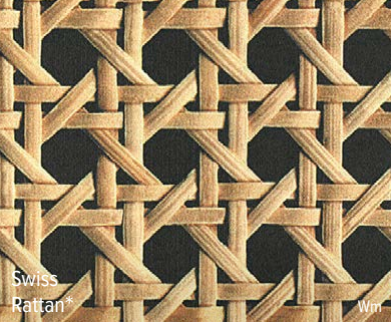


Perugian Walnut    Wm

Specialty Woodmatt \* / inserts



Danish Rattan\*    Wm



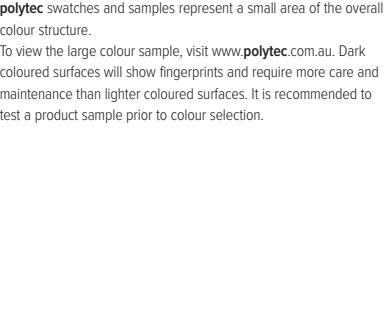
Swiss Rattan\*    Wm



Batten Oak\*    Wm



Dark Batten Oak\*    Wm



Bottega Oak    Wm



Blackened Oak    Wm

**polytec** swatches and samples represent a small area of the overall colour structure. To view the large colour sample, visit [www.polytec.com.au](http://www.polytec.com.au). Dark coloured surfaces will show fingerprints and require more care and maintenance than lighter coloured surfaces. It is recommended to test a product sample prior to colour selection.

Available finishes    **M** = Matt    **Sm** = Smooth    **Wm** = Woodmatt    **R** = Ravine





25mm **SURANO** wardrobe doors in Antico Oak Woodmatt with Mirror Glass inserts.

## ENVIRONMENT & SUSTAINABILITY

At **polytec**, sustainability is ingrained in the core of our business operations, products, and work practices. Our continual dedication to improving and appropriately managing the environmental impact of our products involves our commitment to steadfastly reducing our carbon footprint, minimising waste, optimising energy efficiency and integrating ethically sourced materials into our product ranges.

Our MDF and Particleboard are manufactured from managed and renewable plantation pine that has been Green Tag, Responsible Wood and PEFC certified. All **polytec** board products are manufactured from E0 or E1 substrates, with particleboard now made from a percentage of recycled wood material.

In our pursuit of responsible waste management, we implement various recycling programs encompassing aluminium, metals, used oils, and timber waste, which is repurposed into packaging, particleboard, and energy. We actively engage with local government environmental initiatives, subject ourselves to voluntary audits, and uphold our internal Energy and Carbon Management Policy (ECM), aligned with the Australian Government's Energy Efficiency Opportunities (EEO) program.

Our network of national facilities boasts over 53,000 solar panels, generating 15,238,000 kWh of renewable energy — equivalent to planting 7,377 trees and preventing the emission of 11,000 tonnes of CO<sub>2</sub>. The Oberon facility is Australia's largest rooftop solar system, with 27,000 panels spread across 8 hectares of rooftop.

In our ongoing commitment to sustainability, **polytec** continues to refine and enhance our practices to contribute to the establishment of a circular economy, fostering a better future for all.

**polytec** doors, panels and benchtops are certified Australian Made & Owned.

## CARE & MAINTENANCE

**polytec** do not recommend the use of 25mm Surano Wardrobe door products in a sliding or non-fixed application (hinged) unless the use of a mechanical stabilising system is fitted. 25mm Surano doors are supplied with a protective film to protect the surface during installation. This film must be removed within three months of installation.

Your 25mm Surano doors are made from a Moisture Resistant Medium Density Fibreboard (MR MDF), but as with many wood based panels, they are not waterproof. Care should be taken to wipe up spills immediately, ensuring the doors are not exposed to high or continuous levels of moisture, steam and humidity.

Decorative doors & panels should be cleaned by wiping down with a damp soft cloth and warm soapy water. Followed by drying using a soft or microfibre cloth so as not to leave any residue on the door or panel. For more stubborn stains use a good quality streak free glass cleaner. Always ensure you refer to the recommendations provided by the manufacturer of the cleaning product before use.

By following these simple steps you should retain a beautiful kitchen surface for many years.

Visit [www.polytec.com.au](http://www.polytec.com.au) for specific care and cleaning information.

## IMPORTANT

Darker colours will show superficial wear and tear more readily than lighter coloured surfaces and require more care and maintenance.

The colours and details shown in this brochure are to the highest standards in printing. However, they should only be used as an indication of actual product colour. To order your free colour sample visit [www.polytec.com.au](http://www.polytec.com.au).

**polytec** swatches and samples represent a small area of the overall colour structure, to view a large colour sample or a full sheet design, visit [www.polytec.com.au](http://www.polytec.com.au).

The use of our current samples gives the colour and finish that a customer would expect to receive. Samples are provided for colour and finish selection and **polytec** recommend testing a sample for fingerprint resistance and ease of cleaning. **polytec** does not guarantee exact colour matches across product ranges due to colour variation in each product group.