

# SURANO doors

This shaker style door, using joinery, glued and dowelled in a multipiece construction will add an element of luxury to your home. Surano doors are enhanced by the selection of either Woodmatt, Ravine, or Matt finishes, with the choice of glass inserts, these five piece doors create a modern nostalgic feel in any space.

- Impact resistant to everyday knocks and bumps
- 18mm thickness with 60mm rail
- Glued and dowelled joints ensuring strength and stability
- 9mm matching or contrast insert
- Glass or Mirror insert options
- Maximum size of 2840mm high by 1200mm wide

## NOTE

- Grain direction will always be horizontal through the top and bottom rails, and vertical through the side rails and centre panel
- Individual drawers and drawer banks inserts and rails will not be grain matched



Drawings are for illustrative purpose only, and are not true to scale.

COVER IMAGE: **SURANO** doors in Perugian Walnut Woodmatt.  
**THERMOLAMINATED** Manhattan doors and drawers in Oyster Grey Smooth.



# SURANO doors



**polytec**  
www.polytec.com.au  
p 1300 300 547

**polytec**





Contrasting Insert      Matching Insert



Clear Glass      Frosted Glass



Fluted Glass      Grey Glass



Mirror      Smokey Grey Mirror

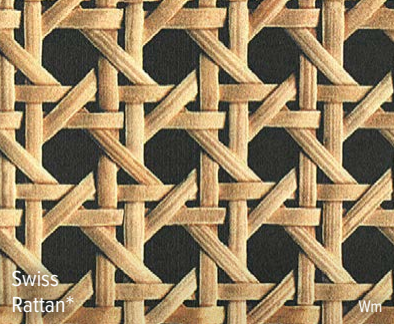
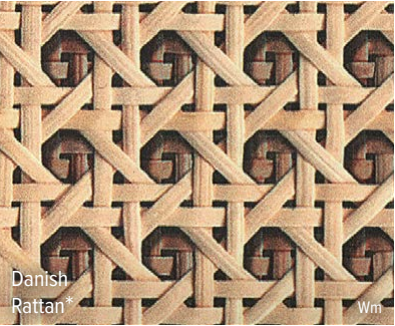


Starphire White Glass      Starphire Black Glass



IMAGE LEFT:  
**SURANO** doors in Perugian Walnut Woodmatt.  
**THERMOLAMINATED** Manhattan drawers in Oyster Grey Smooth.  
  
Drawings are for illustrative purpose only, and are not true to scale.





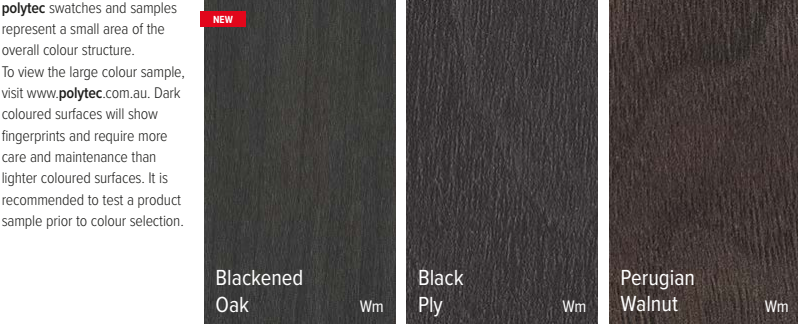
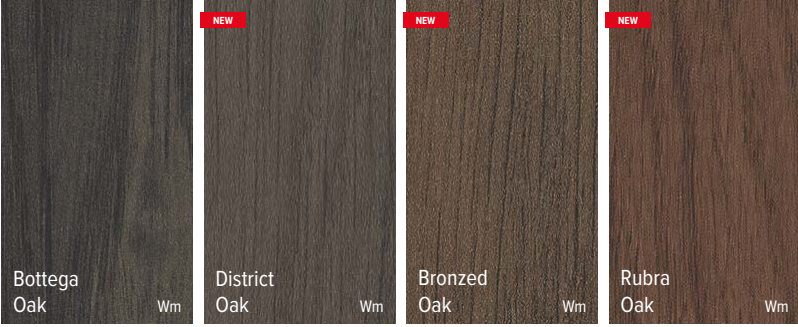
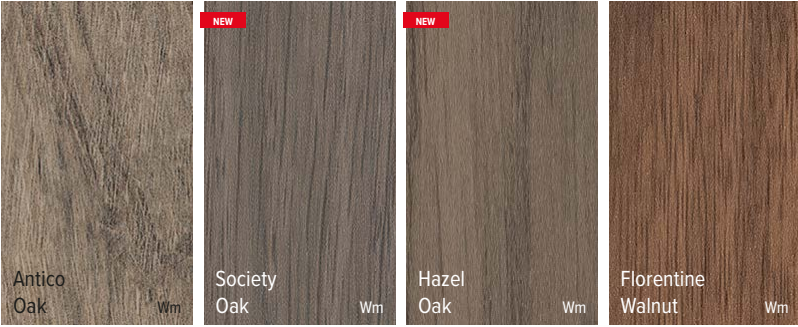
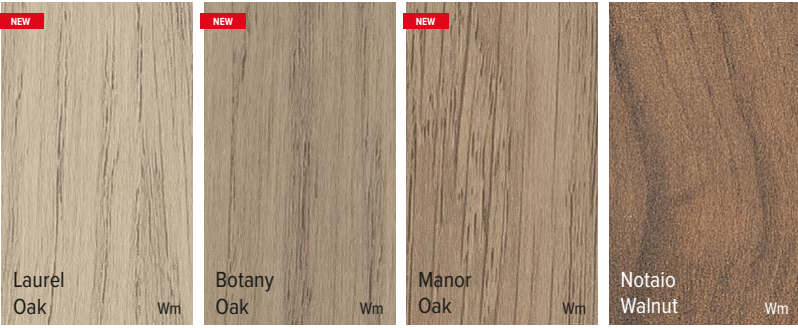
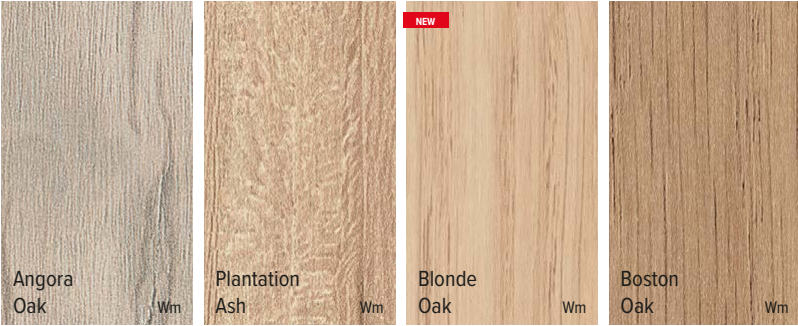
**polytec** swatches and samples represent a small area of the overall colour structure.  
To view the large colour sample, visit [www.polytec.com.au](http://www.polytec.com.au). Dark coloured surfaces will show fingerprints and require more care and maintenance than lighter coloured surfaces. It is recommended to test a product sample prior to colour selection.

Available finishes **Wm** = Woodmatt

\* Specialty Woodmatt only available as door inserts.



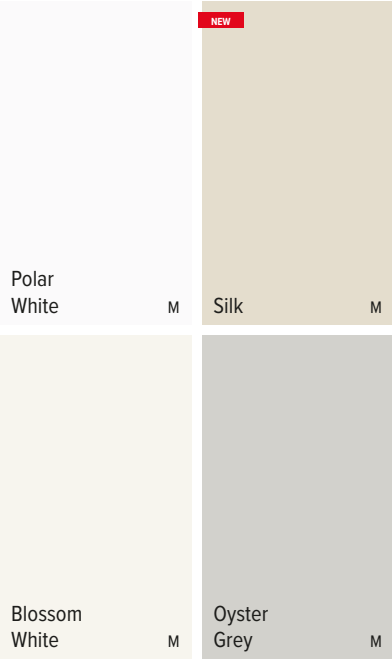
**SURANO** doors in Blonde Oak Woodmatt with Danish Rattan inserts.  
Doors and panels in **DECORATIVE** 18mm Blonde Oak Woodmatt.  
Benchtops in 15mm **XENOLITH** and splashback in 5mm **XENOLITH** White Cement Smooth.



Available finishes **Wm** = Woodmatt



Matt /solid



Ravine /solid & timberprint



**polytec** swatches and samples represent a small area of the overall colour structure. To view the large colour sample, visit [www.polytec.com.au](http://www.polytec.com.au). Dark coloured surfaces will show fingerprints and require more care and maintenance than lighter coloured surfaces. It is recommended to test a product sample prior to colour selection.

Available finishes **M** = Matt **R** = Ravine



**SURANO** doors in Blonde Oak Woodmatt with Danish Rattan inserts.  
Doors and panels in **DECORATIVE** 18mm Blonde Oak Woodmatt.  
Benchtops in 15mm **XENOLITH** and splashback in 5mm **XENOLITH** White Cement Smooth.

ENVIRONMENT & SUSTAINABILITY

At **polytec**, sustainability is ingrained in the core of our business operations, products, and work practices. Our continual dedication to improving and appropriately managing the environmental impact of our products involves our commitment to steadfastly reducing our carbon footprint, minimising waste, optimising energy efficiency and integrating ethically sourced materials into our product ranges.

Our MDF and Particleboard are manufactured from managed and renewable plantation pine that has been Green Tag, Responsible Wood and PEFC certified. All **polytec** board products are manufactured from E0 or E1 substrates, with particleboard now made from a percentage of recycled wood material.

In our pursuit of responsible waste management, we implement various recycling programs encompassing aluminium, metals, used oils, and timber waste, which is repurposed into packaging, particleboard, and energy. We actively engage with local government environmental initiatives, subject ourselves to voluntary audits, and uphold our internal Energy and Carbon Management Policy (ECM), aligned with the Australian Government’s Energy Efficiency Opportunities (EEO) program.

Our network of national facilities boasts over 53,000 solar panels, generating 15,238,000 kWh of renewable energy — equivalent to planting 7,377 trees and preventing the emission of 11,000 tonnes of CO2. The Oberon facility is Australia’s largest rooftop solar system, with 27,000 panels spread across 8 hectares of rooftop.

In our ongoing commitment to sustainability, **polytec** continues to refine and enhance our practices to contribute to the establishment of a circular economy, fostering a better future for all.

**polytec** doors, panels and benchtops are certified Australian Made & Owned.

CARE & MAINTENANCE

**polytec** do not recommend the use of Surano door products in a sliding or non-fixed application (hinged) unless the use of a mechanical stabilising system is fitted. Surano doors are supplied with a protective film to protect the surface during installation. This film must be removed within three months of installation.

Your Surano doors are made from a Moisture Resistant Medium Density Fibreboard (MR MDF), but as with many wood based panels, they are not waterproof. Care should be taken to wipe up spills immediately, ensuring the doors are not exposed to high or continuous levels of moisture, steam and humidity.

Decorative doors & panels should be cleaned by wiping down with a damp soft cloth and warm soapy water. Followed by drying using a soft or microfibre cloth so as not to leave any residue on the door or panel. For more stubborn stains use a good quality streak free glass cleaner. Always ensure you refer to the recommendations provided by the manufacturer of the cleaning product before use.

By following these simple steps you should retain a beautiful kitchen surface for many years.

Visit [www.polytec.com.au](http://www.polytec.com.au) for specific care and cleaning information.

IMPORTANT

Darker colours will show superficial wear and tear more readily than lighter coloured surfaces and require more care and maintenance.

The colours and details shown in this brochure are to the highest standards in printing. However, they should only be used as an indication of actual product colour. To order your free colour sample visit [www.polytec.com.au](http://www.polytec.com.au).

**polytec** swatches and samples represent a small area of the overall colour structure, to view a large colour sample or a full sheet design, visit [www.polytec.com.au](http://www.polytec.com.au).

The use of our current samples gives the colour and finish that a customer would expect to receive. Samples are provided for colour and finish selection and **polytec** recommend testing a sample for fingerprint resistance and ease of cleaning. **polytec** does not guarantee exact colour matches across product ranges due to colour variation in each product group.