

STECCAWOOD

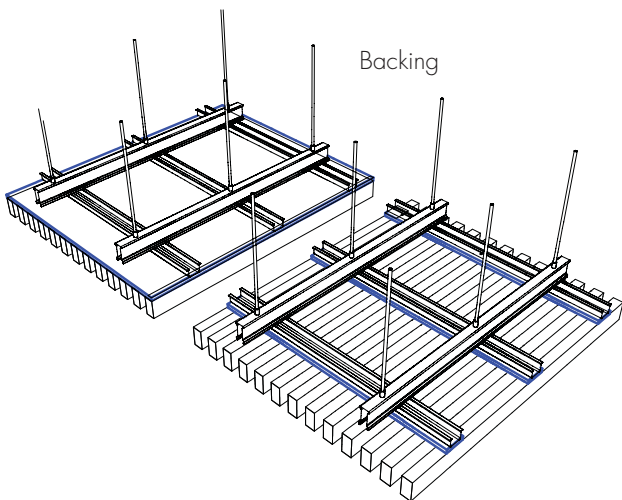
Fixing Guide

Fixing

polytec does not offer a proprietary fixing system for Steccawood. Subject to your specific application there are many fixing possibilities and commercially available systems. Engineered solutions may also need to be considered to account for ceiling structures and batten weights. As a start we recommend using a fixing technique or system ordinarily used for natural timber for either wall or ceiling; keeping in mind that MDF/LDF may need to be pre-drilled. Below are a few suggestions for fixing - refer to relative supplier for further information. When fixing in a three sided application ensure the decorative joint overlap is facing the ceiling or wall.

Possible Fixing Options

Cross Support

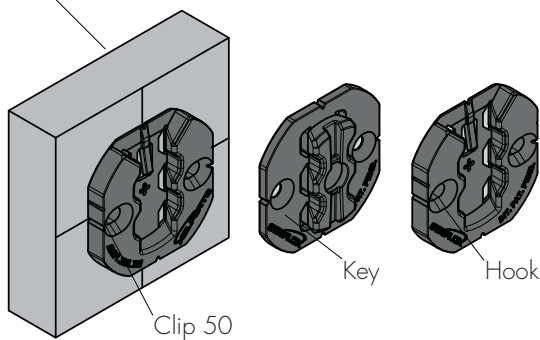


Olmurtech Tech 7 X-Tack



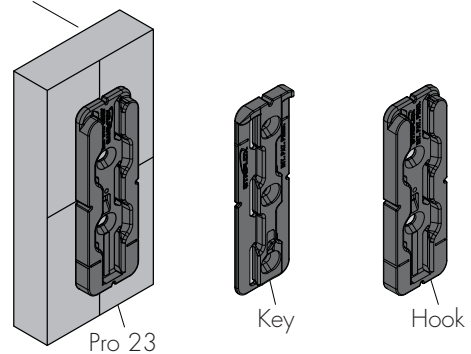
Striplox Clip 50

STECCAWOOD batten



Striplox Pro 23

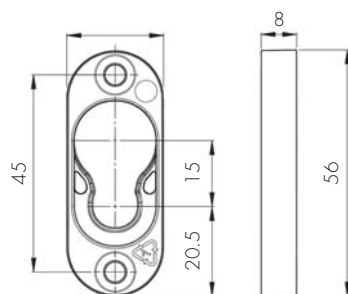
STECCAWOOD batten



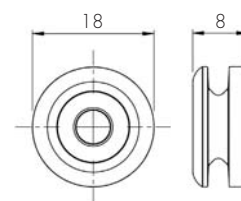
Lincoln Sentry Type 1 Flush Button Fix



Flush Button Fix



Flush Fix



Button

polytec

www.polytec.com.au

p 1300 300 547