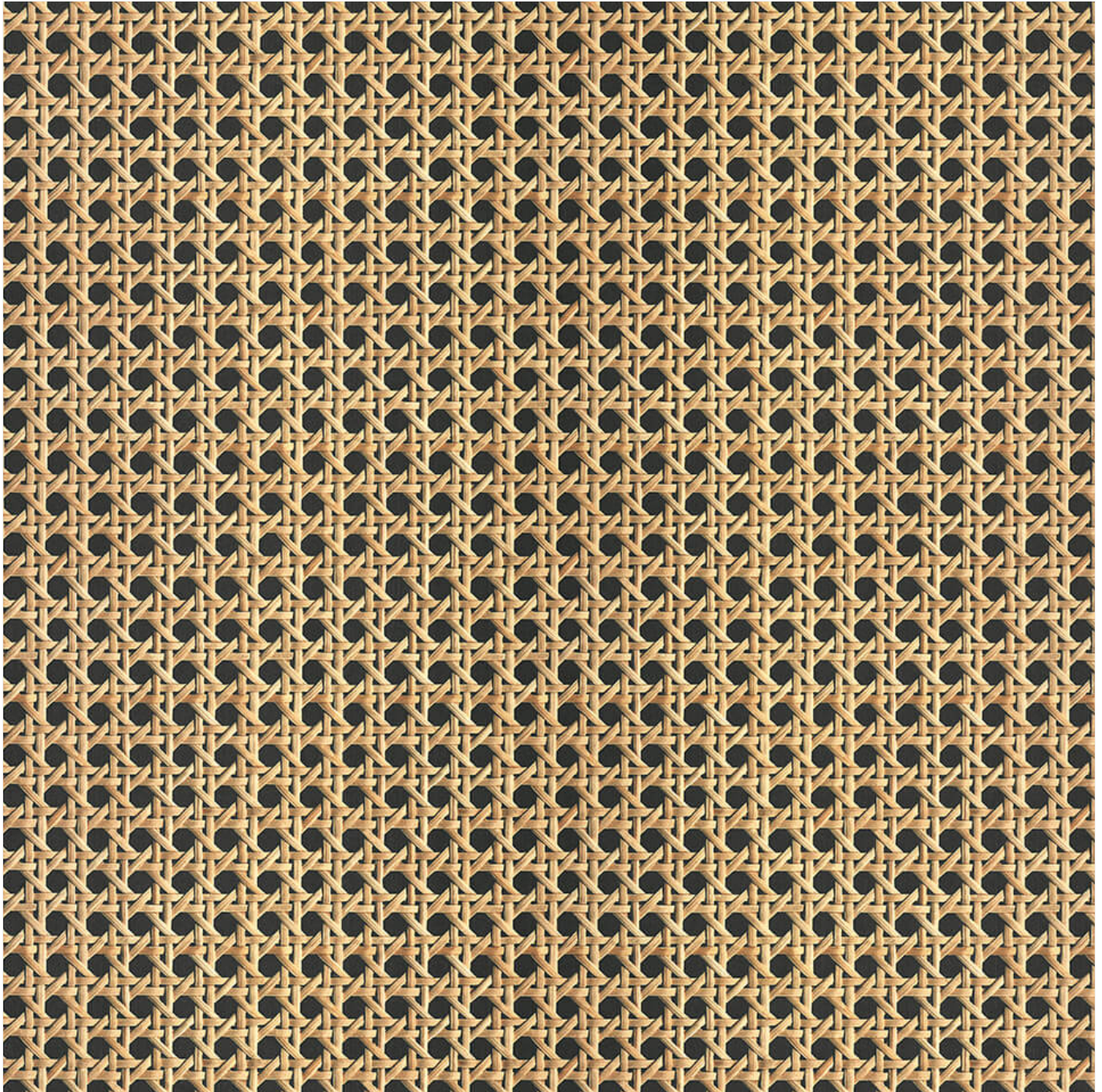


Swiss Rattan

A traditional warm yellow rattan colour with a black centre to give the sense of depth



■ Woodmatt Finish

■ Board Decorative

56520 **MDF 182412 DS Swiss Rattan Woodmatt MR E0**
Finish: Woodmatt Substrate: MDF Thickness: 18 Length: 2400 Width: 1200
Pack Size: 30

56521 **MDF 183112 DS Swiss Rattan Woodmatt MR E0**
Finish: Woodmatt Substrate: MDF Thickness: 18 Length: 3115 Width: 1200

56522 **MDF 092712 DS Swiss Rattan Woodmatt MR E0**
Finish: Woodmatt Substrate: MDF Thickness: 9 Length: 2700 Width: 1200

■ Laminate

56519 **Laminate Swiss Rattan Woodmatt 0.7mm 3650x1220**
Finish: Woodmatt Thickness: 0.7 Length: 3650 Width: 1220

■ How to Contact Us

Within Australia call our Customer Service Centre. Open Monday to Friday 7.30am to 6.00pm EST.

Phone: 1300 300 547

Fax: 1300 320 547

Email: sales@polytec.com.au

Website: www.polytec.com.au

Facebook: facebook.com/polytecdesign

Pinterest: pinterest.com/polytec

■ About Polytec

polytec is an Australian decorative board and laminate brand. Forever the creative thinker, **polytec** invests in pioneering new product and range developments to equip cabinet makers, architects, designers and consumers alike with a palette that's contemporary, forward-looking and comprehensive.

A Comprehensive Palette

With 30 years experience, **polytec** is the fastest growing brand in the decorative surfaces category. Through its manufacturing division, **polytec** leads the way in its commitment to Australian manufacturing and in the development of decorative surfaces for joinery applications in kitchens, living areas, bathrooms, laundries, wardrobes, home offices, furniture and commercial spaces. A collection of locally made and globally curated materials for horizontal and vertical surfaces provides the option of applying a consistent design appearance throughout a project, inserting highlight elements, or selecting materials that are designed to unite & compliment.

Committed to Quality

At the forefront of technology, **polytec** products are manufactured with the most technologically advanced and computer integrated manufacturing systems. A committed, skilled and passionate workforce delivers excellence in craftsmanship and customer service on all platforms in producing materials that meld attention to detail, beautiful finishes and durability. We take pride in offering products that are cutting-edge in quality, aesthetics and performance, relevant to the full-spectrum of project types and bringing them to market at an accessible price point.

Environmentally Aligned

On a daily basis, **polytec** strives to foster an eco-friendly and sustainable environment that minimises our environmental footprint. Making products that are long-lasting and low-maintenance is central to that. **polytec** products are manufactured from managed and renewable plantation pine and on request can be purchased as Responsible Wood chain of custody certified. All **polytec** board products are manufactured from E0 or E1 CUSTOMwood MDF and CUSTOMpine particleboard. Waste is managed responsibly through recycling programs encompassing aluminium and metals and used oils, while timber waste is recycled back into energy and packaging. We subscribe to local government environmental initiatives and voluntary audits as well as our own internal Energy and Carbon Management Policy (ECM), which aligns with the Australian Government's Energy Efficiency Opportunities (EEO) program.

Product Range

Australian projects require materials that are practical, robust and a pleasure to be around. **polytec** has all bases covered with an array of solutions in all decorative surface product sectors including: High pressure laminate, low pressure melamine, made-to-order thermolaminated doors, aluminum framed doors, Ultraglaze acrylic range and Steccawood decorative battens. **polytec**'s diversity of colours, finishes and prints form ranges that are designed to work together, paving the way for highly original and bespoke designs.

■ About this document

We encourage you to use this document as a guide to choosing your colours before making your final selection. Please note that the colours in this document may vary slightly from our actual products due to screen calibration, printer calibration, etc. To order a product sample visit www.polytec.com.au/colour/swiss-rattan